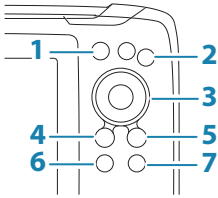


4x GPS, 5x GPS HDI, 7x GPS HDI models

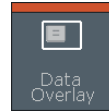
Front controls



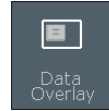
1	Pages	Press to toggle between available pages.
2	Zoom in/out	Press to zoom the image. Press both keys simultaneous to create a MOB (Man Over Board) waypoint at the vessel's position.
3	Arrows	On the GPS Plotter page: press to position the cursor on the image. Press to pan the image in any direction. In menus and dialogs: press to highlight an option.
4	Exit (X)	In menus and dialogs: press to return to previous menu level and to exit a dialog.
5	Menu/Enter	With no menu or dialog active: press to display the menu. In menus and dialogs: press to confirm a selection.
6	Cursor/Waypoint	On the GPS Plotter page: Press to activate/deactivate the cursor. On any page: press and hold to save a waypoint.
7	Power	Press to display the System Controls dialog. Press and hold to power the unit on/off.



System Controls dialog



- Option ON

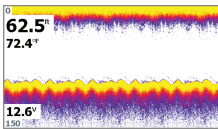


- Option OFF

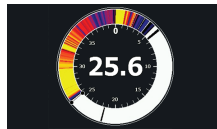
Display illumination

- Set brightness and select day/night mode from the System Controls dialog
- Repeat short presses on the Power key to cycle the backlight brightness

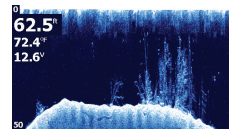
Sonar/Flasher/DownScan pages



Sonar



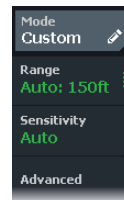
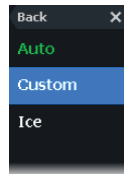
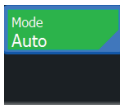
Flasher



*Downscan
(5x and 7x models)*

By default the unit is set to **Auto** mode, and all settings are automated.

- Change to **Custom** mode to allow for customizing the settings.



GPS Plotter page



- Zoom the image by using the Zoom keys
- Pan the image in any direction by using the Arrow keys
- Display item information by positioning the cursor on an item and then pressing Menu/Enter key

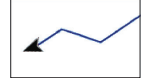
Creating a route on the GPS Plotter page

1. Press an Arrow key to activate cursor mode
2. Press the Menu/Enter key to activate the menu, then select the **New route** option in the menu
3. Press the Arrow keys to position the first route point, then press the Menu/Enter key to confirm the position
4. Repeat step 3 to position additional route points
5. Press the X key to save the route



Trails

The system automatically tracks and draws the vessel's movement on the chart panel. Trails are managed from the Trails dialog.



To display the trails dialog:

1. Select **W/R/T** from the menu
2. Select the **Trails** tab in the dialog
3. Select the trail you want to edit

	Display	Record	Color	Points
Today's activity track	<input type="checkbox"/> OFF	<input type="checkbox"/> OFF		1
T001	<input checked="" type="checkbox"/> ON	<input type="checkbox"/> OFF		2424
T002	<input checked="" type="checkbox"/> ON	<input type="checkbox"/> OFF		1

Edit Trail			
T002			
	<input checked="" type="checkbox"/> ON	<input type="checkbox"/> Display OFF	<input type="checkbox"/> Record
Delete	Show	Save	Cancel

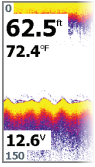
Creating waypoints

Press and hold the Cursor/Waypoint key to save a new waypoint.

- With cursor inactive, the waypoint is placed at the vessel's position
- With cursor active, the waypoint is placed at the cursor position



Overlay data



The data type can be changed, and the item position on the image is selectable.

The data items can be turned on/off from the System Controls dialog.

Each data item can be removed individually from the panel:



1. Select the **Edit overlay** option in the System Controls dialog to turn the unit into edit mode
2. Press the Menu/Enter key to display edit options
3. Press the X key to leave edit mode

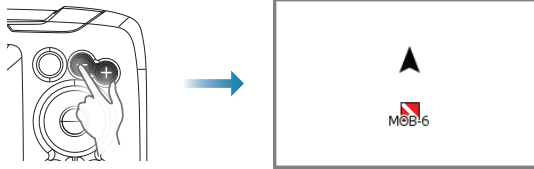
Stopping the sonar



Use the **Stop Sonar** option in the System controls dialog to stop the transducer from pinging without turning the unit off.

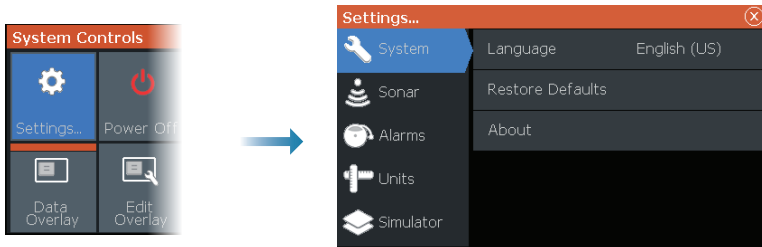
Creating a Man Over Board (MOB) waypoint

Activate a MOB waypoint by pressing both Zoom keys simultaneously.



Settings dialogs

Used for system configuration.



Product manuals

For the full Operator manual, technical specifications and declarations refer to the product website: www.lowrance.com.